

Customer :

customer

Customer part :

customer part

Comment :

Comment

S1=4.71

S2=4.74

Tmax=456

Tp S2=495.0

PI=0.5

HI=89

Sample =1743.30

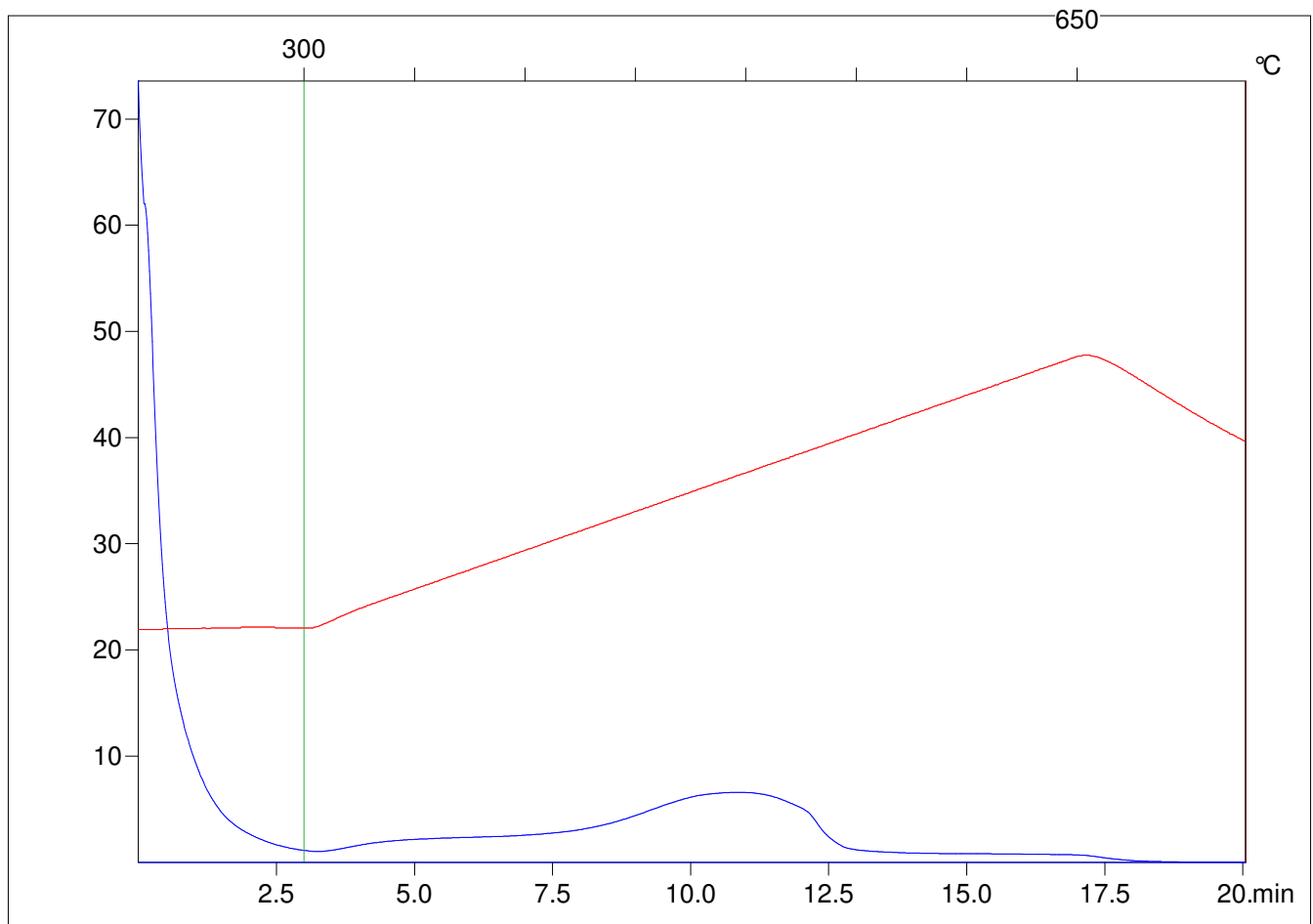
Method =Bulk Rock

Cycle=Basic

KFID(10\*9)=1444

Qty =70.8

TOC=5.31



C:\VINC\PK2\_1792\PK080.R00 : FID pyrolysis graphic

State

Pyro Status

Oxi Status